

# Heat Mat

## Ice & Snow Systems



Gutter Protection



Roof Protection

## Heat Mat Ice and Snow Melting for Roofs and Gutters

Scandinavian designed systems to protect people and property



FRO-16A-STAT



FRO-TEM-SENS

FRO-GUT-CHAI/FRO-GUT-BEAM



FRO-GUT-GUID



FRO-GUT-SENS

### Automated Roof and Gutter Heating

- A complete range of heating cables, thermostats and fitting accessories to provide fully automated protection against dangerous ice and snow build-up on roofs and in gutters.
- The gutter heating systems ensure that gutters and downpipes do not get blocked by ice and snow and allow melting snow on the roof to drain freely. This prevents dangerous icicles or snow build-up forming which could fall from the roof injuring anyone below, and could also collapse the buildings gutters.
- Roof heating systems are suitable for preventing significant build-ups of snow on flat roofs, which could lead to the roof collapsing. These systems are also suitable for preventing localised snowdrift build-up on roofs against neighbouring buildings.
- Custom made ice and snow melting thermostats monitor the air temperature and can control two separate zones independently to ensure the system works effectively. The addition of moisture sensors in the gutters or on the roof will cut the running costs by up to 80% by ensuring that the system only heats when it is cold, and there is moisture present.

### Product Programme

Product Code	Description
FRO-47A-STAT	10.8kW Snow melting thermostat with moisture detection
FRO-16A-STAT	3.6kW Snow melting thermostat with moisture detection
FRO-16A-GSTA	3.6kW gutter heating thermostat with air temperature sensor
Sensors	
FRO-TEM-SENS	Wall mounted external air temperature sensor
FRO-GUT-SENS	Gutter moisture detection sensor
FRO-GUT-GUID	Cable guides for heating cable in standard gutters
FRO-GUT-CHAI	1m Chain for downpipe heating cable
FRO-GUT-DOWN	Cable guide for downpipe heating cable
FRO-GUT-BEAM	Suspension beam for downpipe chain
FRO-GUT-PROT	Cable protector for gutters and downpipes

### System specification

From a simple five meter gutter system, through to a 20,000m<sup>2</sup> roof heating project, every application is individually specified to ensure that the most suitable system is offered. Heat Mat offer the widest range of ice and snow protection systems in the UK, and you can be assured that virtually whatever your requirements there will be a suitable system to meet them.

Call 01444 247020  
to find out more or  
visit our website at  
[www.heatmat.co.uk](http://www.heatmat.co.uk)

### Roof & Gutter Heating System Features

- Fully automated prevention of dangerous ice and snow build-up on roofs and in gutters.
- Prevent gutters collapsing due to the weight of ice and snow.
- Ensure walkways and roads beneath roofs do not suffer from potentially dangerous falling icicles or snow.
- Prevent roofs collapsing on factories and warehouses due to the weight of large build-ups of snow.
- Avoid the expense of having to structurally strengthen old roofs if new buildings are built abutting them, by preventing the risk of snowdrifts against the new wall.
- A wide variety of thermostat and control options suited to each systems individual requirement.
- Save up to 80% on normal running costs by using our moisture sensors, which prevent the system activating unless there is moisture present.

Compatible with:



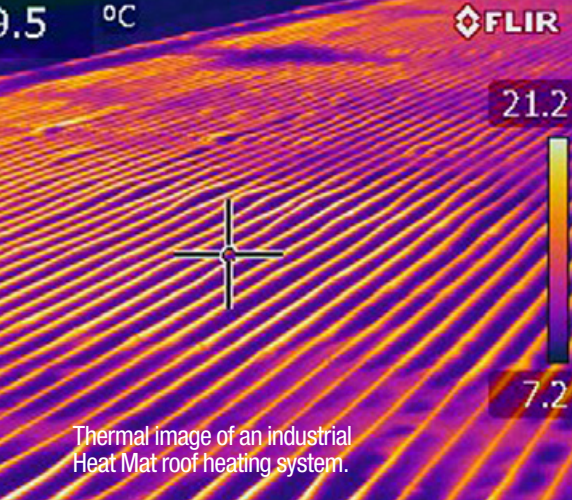
Ice and snow thermostats



7mm cable



Trace heating cable



Thermal image of an industrial Heat Mat roof heating system.

### Trace heating v constant Wattage cables

Although trace heating cables are entirely suitable for heating gutters and roofs, and are occasionally the only option, quality trace heating comes with a premium price tag. To compliment our trace heating cable Heat Mat has developed a constant Wattage outdoor heating cable for roofs and gutters which is significantly less expensive than self-limiting cable, while remaining UV stable and highly protected against the elements. This provides a great value roof and gutter heating system which also has an expected life of more than 25 years.

### Gutter heating accessories

In addition to the gutter heating cables Heat Mat offer a comprehensive range of fitting accessories to allow the simple installation of the heating system. These accessories include clips for holding the cables in the gutter and spacing them apart, and chains and suspension beams to ensure the downpipes are heated correctly to ensure the safe removal of the meltwater. There is also a range of cable fixing bands suitable for fixing cables in drainage valleys and water hoppers.

### System life and running costs

All of Heat Mat's roof and gutter heating systems have a life expectancy of more than 25 years, and there is no reason why they shouldn't operate for more than 50 years. The running costs of the system will depend on the control gear used (moisture sensors reduce running costs by around

80%), the local weather conditions and how much snow there is each winter. For gutter heating systems using a moisture sensor, a running cost of around 70p per meter per year or less would be expected in most areas of the UK. Costs in particularly cold parts of the country will actually be less, as the snow will not melt each day therefore the gutters will remain ice free once they are first cleared.

The costs of operating a roof heating system vary considerably depending on how they are used, however in many years there would be no requirement to power them up at all unless significant snow was expected. In fact a layer of snow on a roof acts as a great insulator, lowering the heating bills of the building below.

### Roof heating systems

The most common reasons for installing a large roof heating system are to prevent roof collapse due to heavy snow build-up, or where new equipment needs to be suspended from the roof and the architect needs to lower the requirement for snow loading from the calculations. Heat Mat has the expertise to specify a heating system and bespoke fixing accessories which will fulfil the requirements regardless of the roof type or material.

Very often it is not necessary to heat the entire roof and alternative options can be looked at, such as preferentially heating the weakest sections of the roof. Heat Mat can work with your structural engineer to ensure that the most effective system is supplied with the most reasonable costs for purchase, installation and running.

### Large projects

For particularly large projects Heat Mat's Ice and Snow melting Technical Team can visit to work with you and your structural engineer/architect to decide on the most suitable system. This team includes David Green and Paul Brandon from Heat Mat, along with ice and snow melting specialists from our Scandinavian partners Heatcom and OJ Electronics.

### FITTING ACCESSORIES



FRO-GUT-GUID



FRO-GUT-CHAI



FRO-GUT-DOWN



FRO-GUT-BEAM



FRO-GUT-PROT



Made in Denmark



### About Heat Mat

With more than 1,200,000m<sup>2</sup> of underfloor heating installed, 20 years' experience of the UK underfloor heating market and a wealth of knowledge on Scandinavian ice and snow melting systems, you can rely on Heat Mat to understand your needs and supply the products to satisfy your requirements.

This is why we are the Professionals' Choice, the number one supplier of electric underfloor heating and ice and snow melting systems to the UK's professional installation market.



### Contact us

Heat Mat Limited  
Ashwyn Business Centre,  
Marchants Way, Burgess Hill,  
West Sussex, RH15 8QY

T. 01444 247020  
F. 01444 247121  
Email sales@heatmat.co.uk

www.heatmat.co.uk

# Heat Mat

## Ice & Snow Systems



To see all of our products use your smart phone to scan this code.



OJ Electronics – the manufacturer of Heat Mat Thermostats is one of the world's leading manufacturers of controls for ice and snow melting. OJ's products are recognised worldwide for their innovative design and high quality.